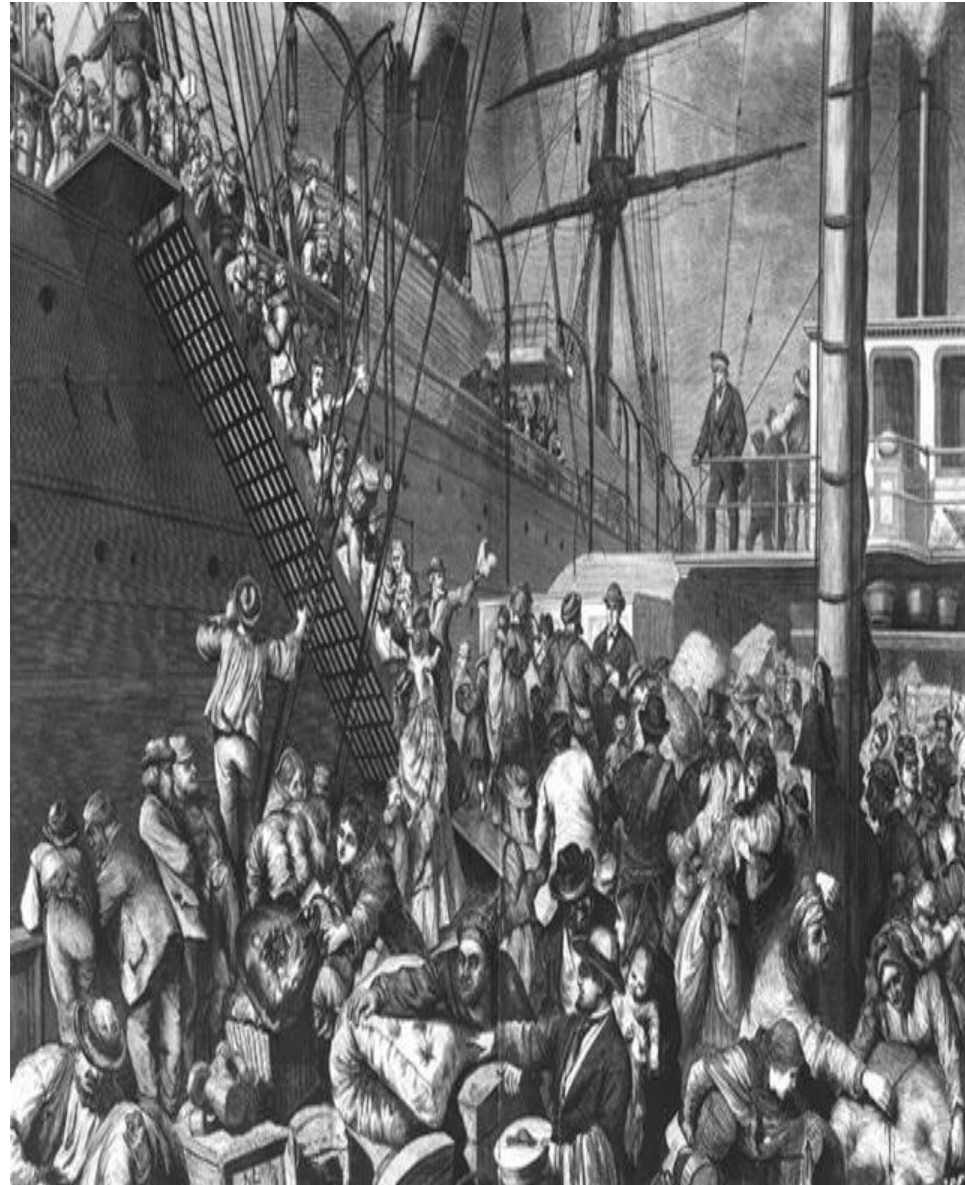


CHANGING AMERICAN SOCIETY

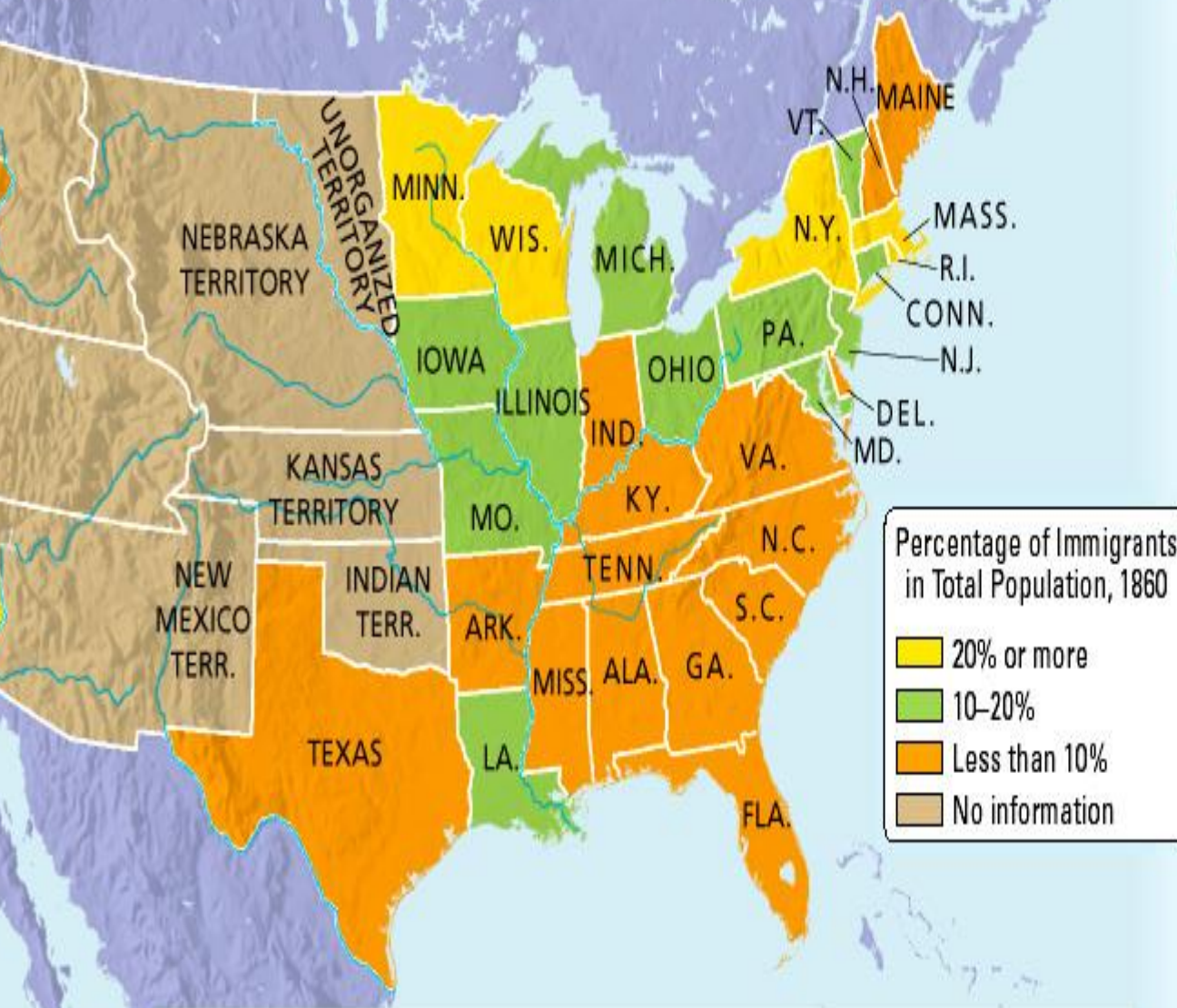


Rise of Immigration

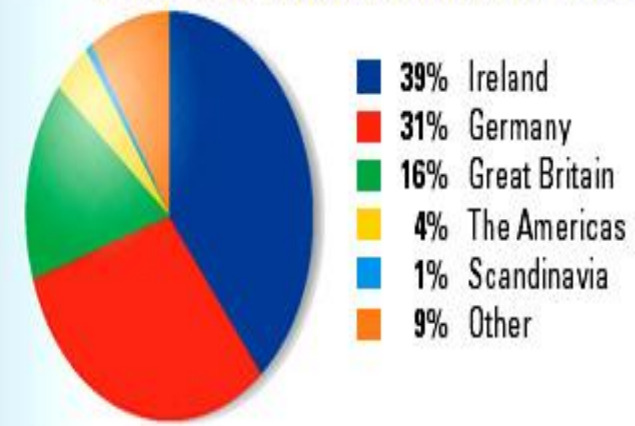
- Between 1820-1860 over 5 million immigrants migrated to the U.S.
 - Ireland
 - Escaping Potato Famine and unfair land practices from British landlords
 - Germany
 - Escaping violent revolutions in Europe
- Drawn by political and economic opportunities in the U.S.



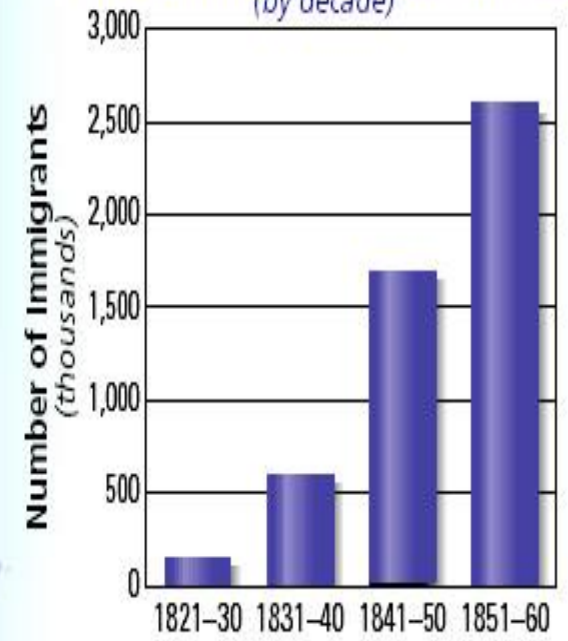
Immigration and Settlement, 1820–1860



Sources of Immigration, 1820–1860



Immigration to the United States (by decade)



GEOGRAPHY SKILLBUILDER Interpreting Maps

1. Place Which states had the highest percentage of immigrants in 1860?

Rise of Immigration

- Most immigrants moved to the northern and western sections
 - Lack of economic opportunities in the south
 - Cheap land available in the west
 - Erie Canal aided travel westward
 - German
 - Abundance of factory jobs attracted most immigrants to northern cities
 - Irish



Fear of Immigrants

- Some native born Americans disapproved of this uptick of immigration
 - Feared immigrants would replace them in factory jobs
 - Off put by different culture traits
 - Irish Catholics
 - Nativism: opposed immigration
 - Formed their own political party “Know Nothings”



Emergence of the Middle Class

- Increased success of smaller farmers and businessmen led to an emergence of a new social class



- Middle Class: distinct group between the rich and poor

- Previously unheard of
- More leisure time

- Theatres

- Literature II

- » Edgar Allen Poe

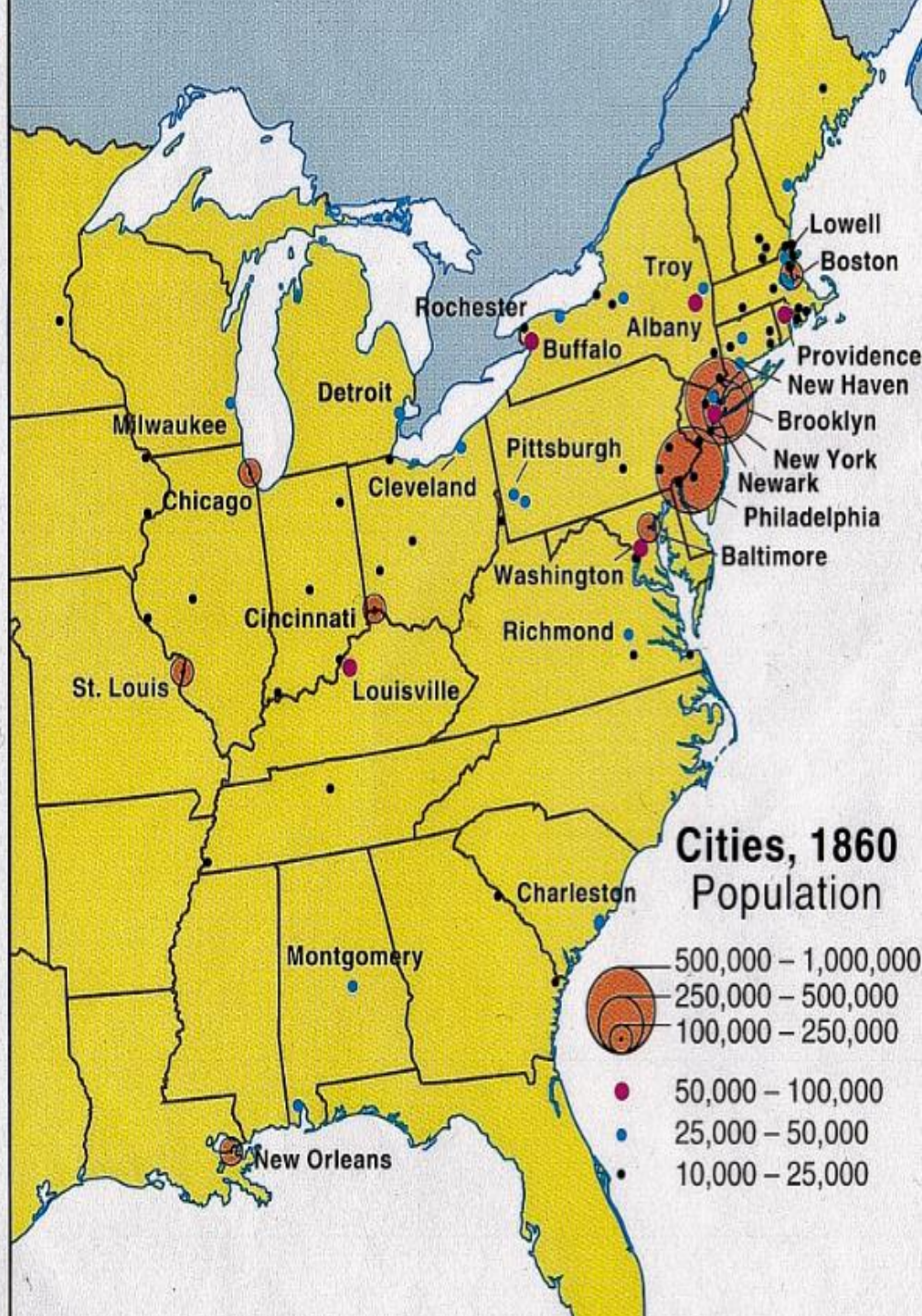
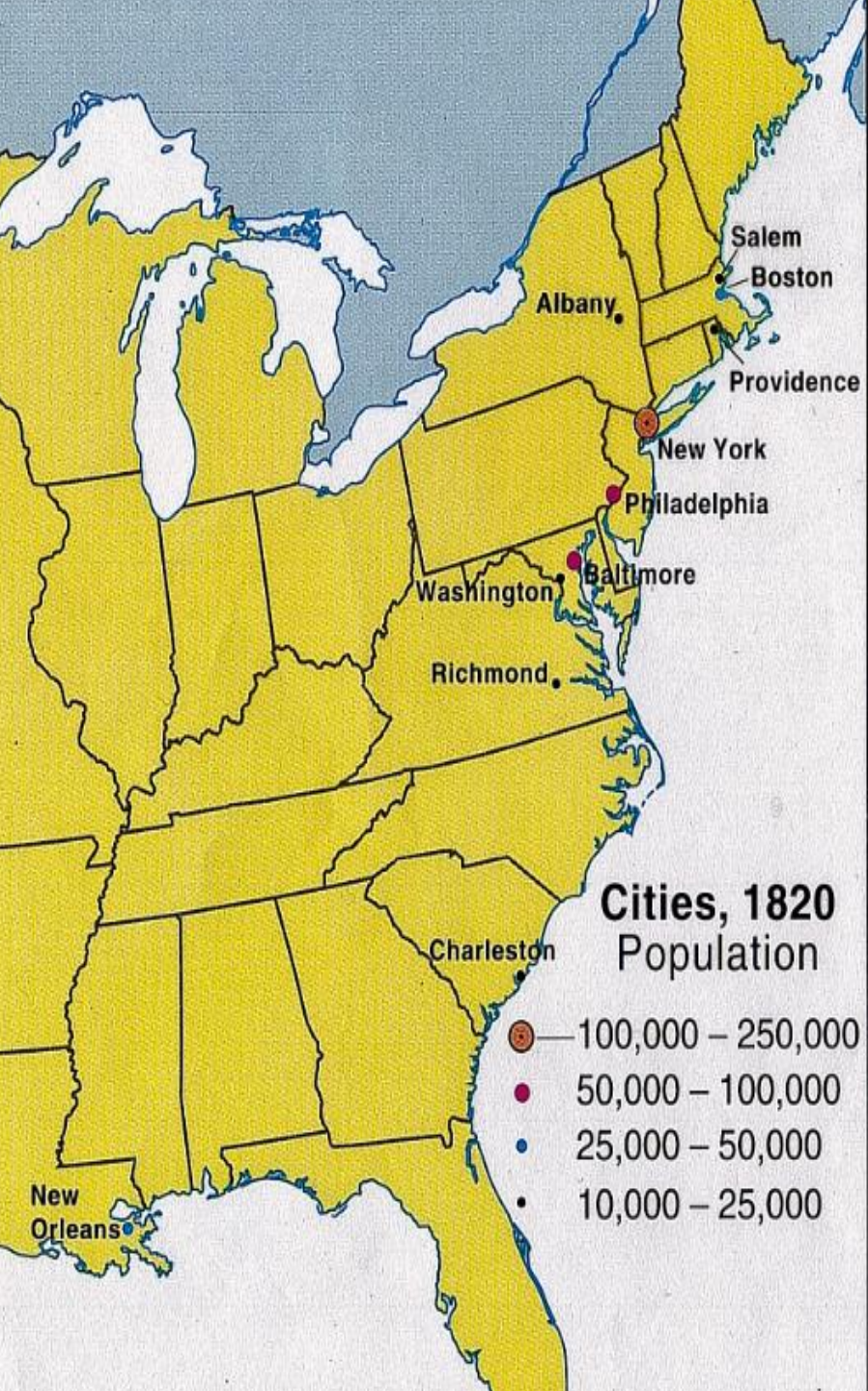
- Songs

- » Stephen Foster

- Circus

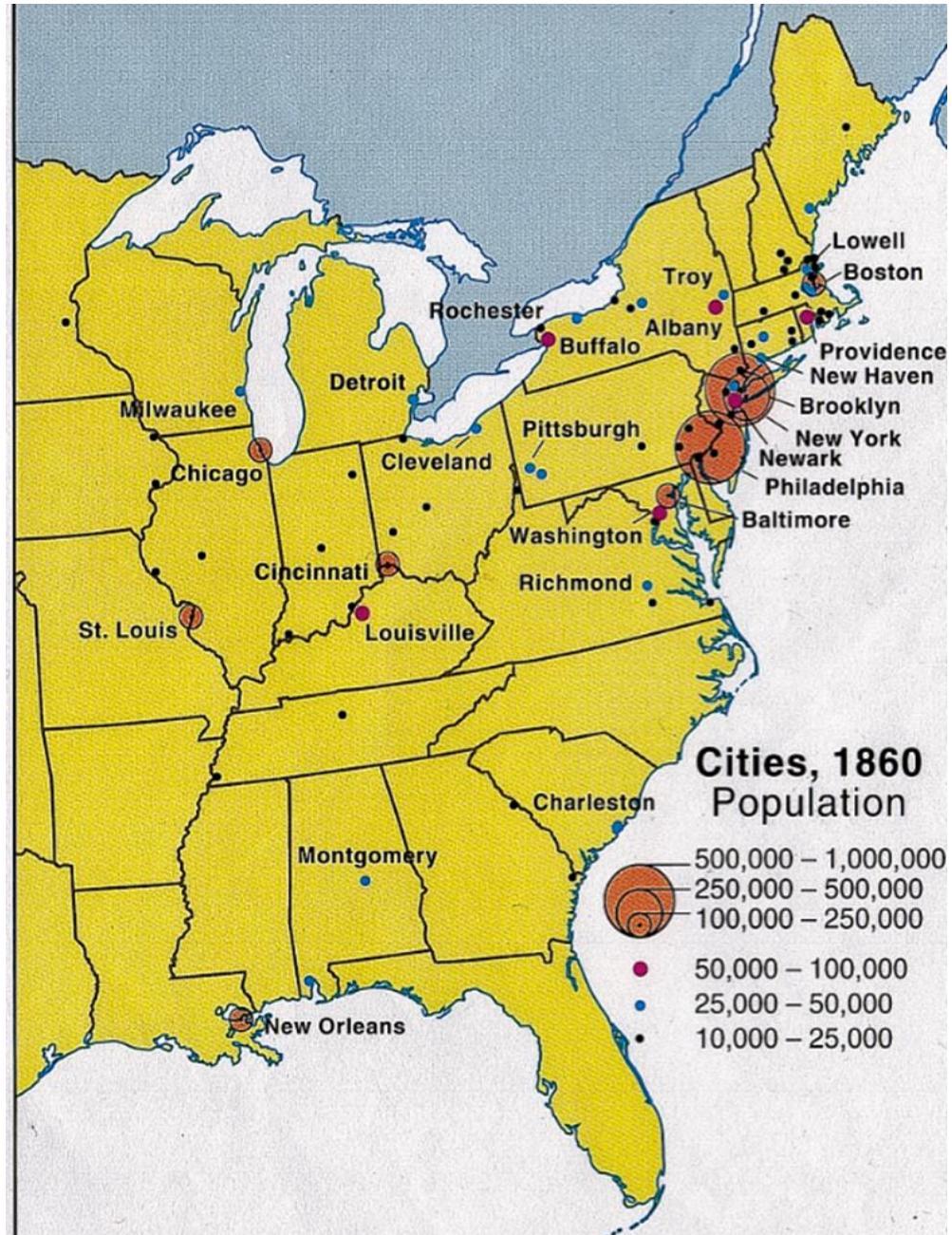
- » P.T. Barnum

- Baseball begins to develop

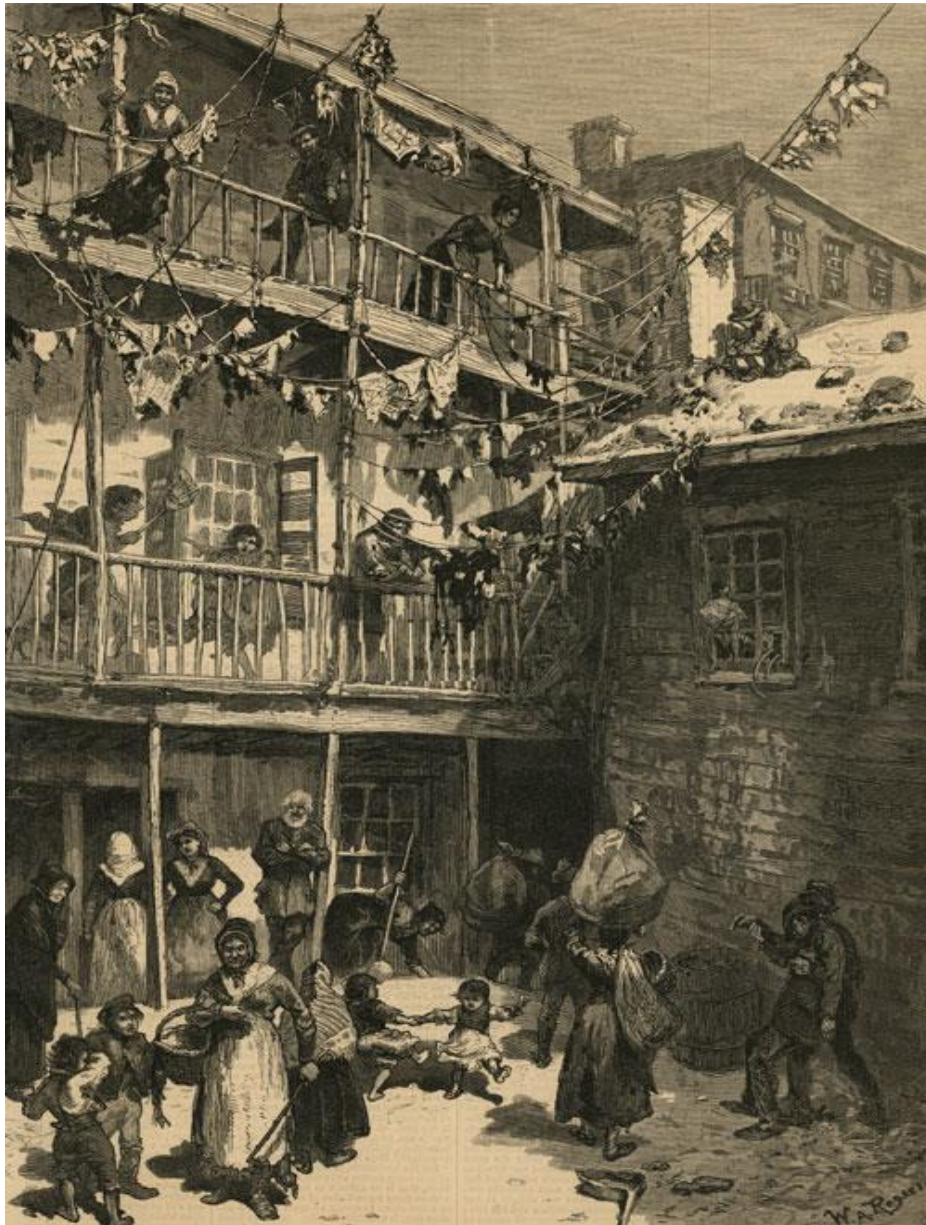


Growth of Cities

- Improvements in transportation and expanding economic opportunities allowed cities to grow (**urbanization**)
 - In 1820: 1 city 100,000+
 - In 1860: 10 cities 100,000+
 - NYC over 1 million
 - Overwhelmingly in the north
 - Steamboat and railroad
 - Attracted immigrants



Urban Problems



- Rapid development of cities did not allow time for proper urban planning which resulted in several difficulties
 - **Tenements**: poorly designed apartments
 - Overcrowding
 - Unsafe working/living conditions
 - Poor sanitation
 - Disease epidemics
 - Insufficient services
 - Police and Fire
 - Schools
 - Hospitals

Reform



**Who now has time to
deal with these growing
lists of concerns?**

**The brand new
middle class!**